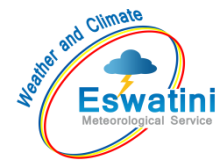


# AGROMETEOROLOGICAL BULLETIN

Doc No: TEA 3/3/7/2 F-004  
Revision No: 1  
Effective Date: 01.07.2017  
Page No: 1 of 5  
Approved by:



**REPORTING PERIOD:**  
**21 – 31 MARCH 2025**



**ISSUE No.: 18**

**SEASON: 2024/25**

**RELEASED: 04/04/2025**

## CONTENTS

CONTENTS .....	1
HIGHLIGHTS .....	1
RAINFALL AND TEMPERATURES .....	2
RAINFALL .....	2
TEMPERATURES .....	3
MAIZE AND OTHER CROPS.....	3
MAIZE CROP STAGE AND CONDITION..	3
OTHER CROPS .....	3
CURRENT FARMING ACTIVITY .....	3
LIVESTOCK AND PASTURES .....	3
WATER SITUATION .....	3
MEDIUM-TERM OUTLOOK .....	4
RAINFALL .....	4
TEMPERATURE .....	4
SOIL MOISTURE .....	4
WIND SPEED.....	4

## HIGHLIGHTS

- **Average rainfall observed...**
- **Good vegetation condition....**
- **Slight decrease in rainfall is anticipated**
- **Warm to hot temperatures forecasted...**
- **Improvement in soil moisture expected.....**

**Compiled and Issued by: Agrometeorological Unit,**

**Swaziland Meteorological Service, Ministry of Tourism and Environmental Affairs.**

**Box 2652, Mbabane, Swaziland. ☎ (+268) 2404 8859 / 2404 6274.   Fax: 2404 1530**

**E-mail: [dudu@swazimet.gov.sz](mailto:dudu@swazimet.gov.sz)**

## AGROMETEOROLOGICAL BULLETIN

Doc No: TEA 3/3/7/2 F-004

Revision No: 1

Effective Date: 01.07.2017

Page No: 2 of 5

Approved by:

### RAINFALL AND TEMPERATURES

#### RAINFALL

About average rainfall was observed in the 3<sup>rd</sup> dekad of March 2025 (Figure 1 and (Map 1).

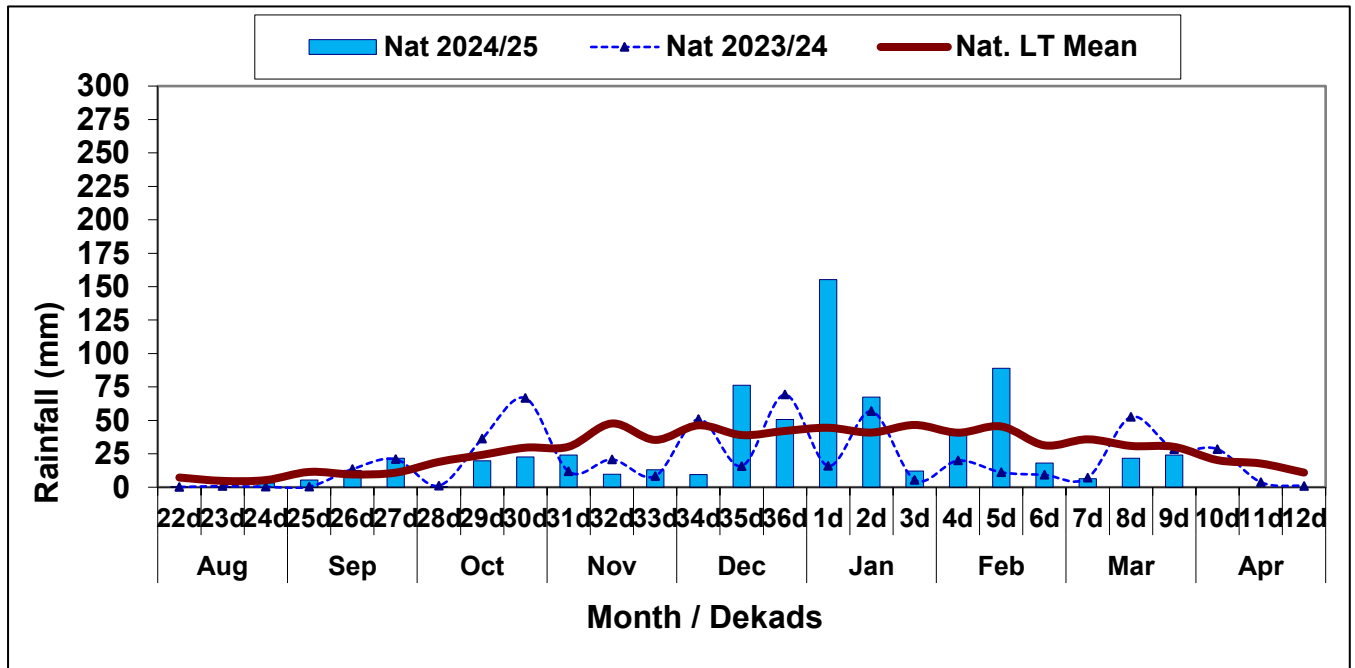
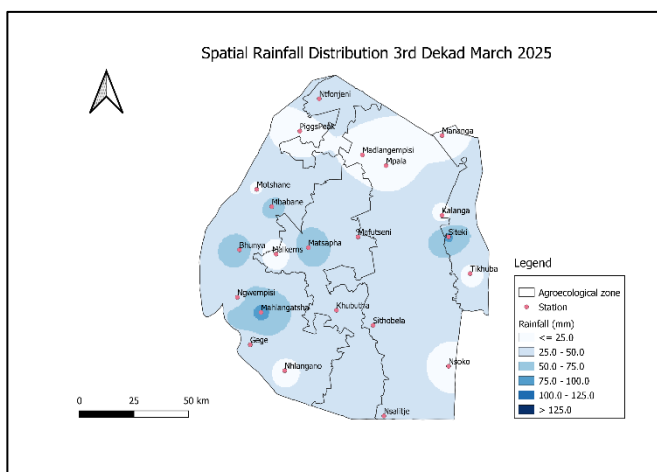
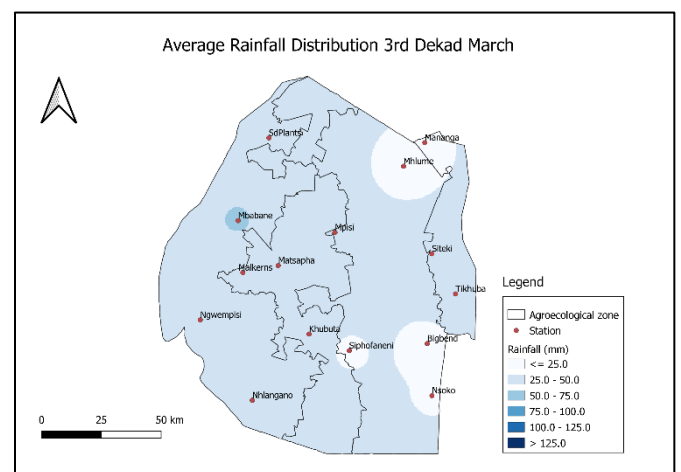


Figure 1: Rainfall distribution 3<sup>rd</sup> dekad March 2025



Map 1: Spatial rainfall distribution 3<sup>rd</sup> dekad March 2025



Map 2: Average rainfall distribution 3<sup>rd</sup> dekad March

Compiled and Issued by: Agrometeorological Unit,

Swaziland Meteorological Service, Ministry of Tourism and Environmental Affairs.

Box 2652, Mbabane, Swaziland. ☎ (+268) 2404 8859 / 2404 6274. 📠 Fax: 2404 1530

E-mail: [dudu@swazimet.gov.sz](mailto:dudu@swazimet.gov.sz)

## AGROMETEOROLOGICAL BULLETIN

Doc No: TEA 3/3/7/2 F-004

Revision No: 1

Effective Date: 01.07.2017

Page No: 3 of 5

Approved by:

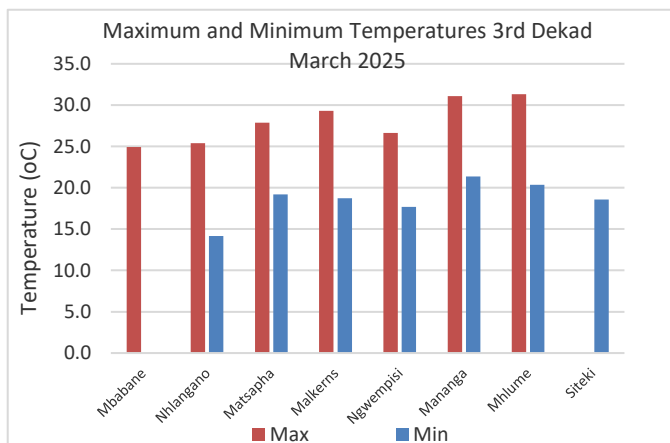
Rainfall observed was about average, save for the Lubombo Plateau region which observed slightly above average rainfall during the reporting period (**Table 1**).

**Table 1: Rainfall (mm) 3<sup>rd</sup> dekad March 2025**

	HV	MV	LV	LP
<b>2023/24</b>	43	23	17	32
<b>Average</b>	38	31	23	31
<b>2024/25</b>	23	25	18	50
<b>Anomaly</b>	<b>-15</b>	<b>-7</b>	<b>-5</b>	<b>19</b>

### TEMPERATURES

Cool to warm temperatures were generally observed during the reporting period. Most of the regions observed below average temperatures (**Figure 2**).



**Figure 2: Maximum and Minimum temperatures 3<sup>rd</sup> dekad of March 2025**

## MAIZE AND OTHER CROPS

### MAIZE CROP STAGE AND CONDITION

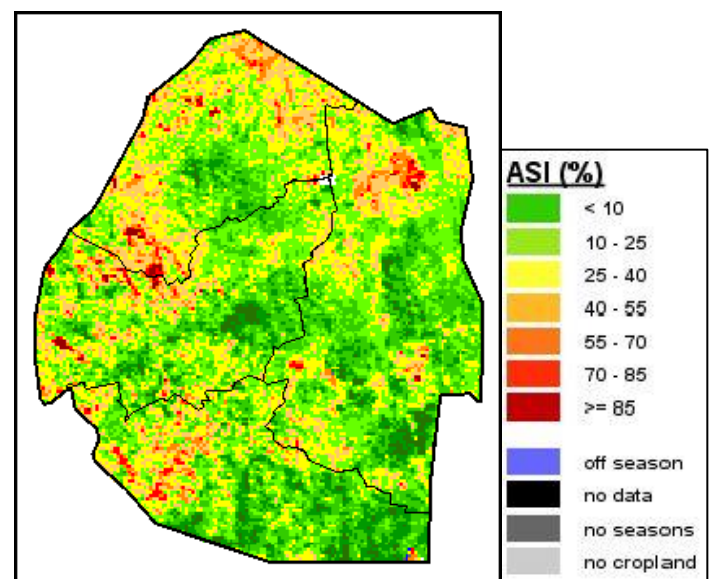
Maize is mostly at maturing.

### OTHER CROPS

No other crops reported to have been planted.

### CURRENT FARMING ACTIVITY

Farmers are harvesting some matured maize



**Image 1: Agriculture Stress Index 3<sup>rd</sup> dekad March 2025**

Source: FAO-GIEWS

## LIVESTOCK AND PASTURES

Livestock is in good condition as rangelands are reported to be in good condition.

## WATER SITUATION

Most dam levels are at satisfactory capacities.

Compiled and Issued by: Agrometeorological Unit,

Swaziland Meteorological Service, Ministry of Tourism and Environmental Affairs.

Box 2652, Mbabane, Swaziland. ☎ (+268) 2404 8859 / 2404 6274. Fax: 2404 1530

E-mail: [dudu@swazimet.gov.sz](mailto:dudu@swazimet.gov.sz)

## AGROMETEOROLOGICAL BULLETIN

Doc No: TEA 3/3/7/2 F-004

Revision No: 1

Effective Date: 01.07.2017

Page No: 4 of 5

Approved by:

### MEDIUM-TERM OUTLOOK

#### RAINFALL

A slight decrease in rainfall is anticipated in the outlook period.

#### TEMPERATURE

Warm to hot temperatures are anticipated in the outlook period.

#### SOIL MOISTURE

An improvement in soil moisture is expected in the outlook period.

#### WIND SPEED

Wind will generally be light during the outlook period.

**NB: Outlook period is ten days from date of issue**

Compiled and Issued by: Agrometeorological Unit,

Swaziland Meteorological Service, Ministry of Tourism and Environmental Affairs.

Box 2652, Mbabane, Swaziland. ☎ (+268) 2404 8859 / 2404 6274. Fax: 2404 1530

E-mail: [dudu@swazimet.gov.sz](mailto:dudu@swazimet.gov.sz)

## AGROMETEOROLOGICAL BULLETIN

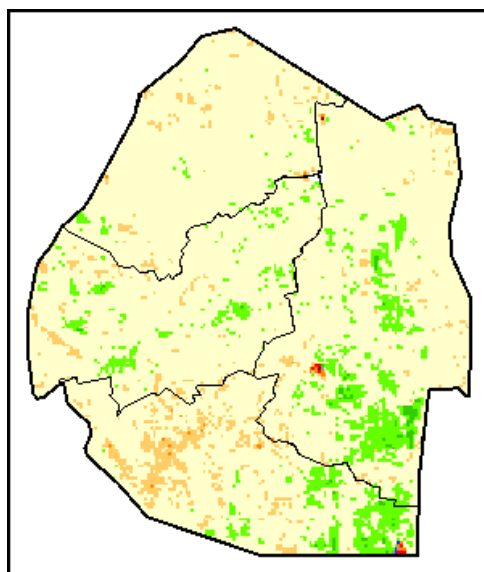
Doc No: TEA 3/3/7/2 F-004

Revision No: 1

Effective Date: 01.07.2017

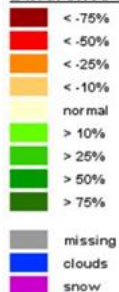
Page No: 5 of 5

Approved by:

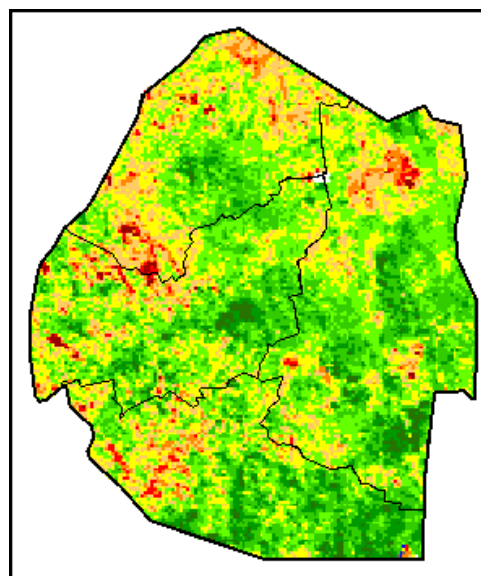


### Legend

#### Difference to LTA

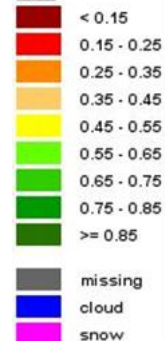


**Image 2:** Normalized Difference Vegetation Index (NDVI) Anomaly (3<sup>rd</sup> Dekad March 2025)  
Source: FAO-GIEWS



### Legend

#### VHI



**Image 3:** Vegetation Health Index (VHI) (3<sup>rd</sup> Dekad March 2025)  
Source: FAO-GIEWS

Compiled and Issued by: Agrometeorological Unit,

Swaziland Meteorological Service, Ministry of Tourism and Environmental Affairs.

Box 2652, Mbabane, Swaziland. ☎ (+268) 2404 8859 / 2404 6274. Fax: 2404 1530

E-mail: [dudu@swazimet.gov.sz](mailto:dudu@swazimet.gov.sz)